

VENUS Notice to Mariners – December 2011

Project: The Victoria Experimental Network Under the Sea (VENUS) is an oceanographic project managed by the University of Victoria. It consists of cabled observatories in both Saanich Inlet (Patricia Bay) and the Strait of Georgia. From a shore landing, an armoured marine cable extends along the ocean bottom to large observatory “nodes”, into which oceanographic instrument systems connect. High voltage power is supplied down the cable, and Ethernet communications along fibre optics bring data and images back to the University in real time. Project status, system

information, and data are available from the VENUS web site: www.venus.uvic.ca

What: High voltage marine fibre optic cables and observatory systems (see web site for system details).

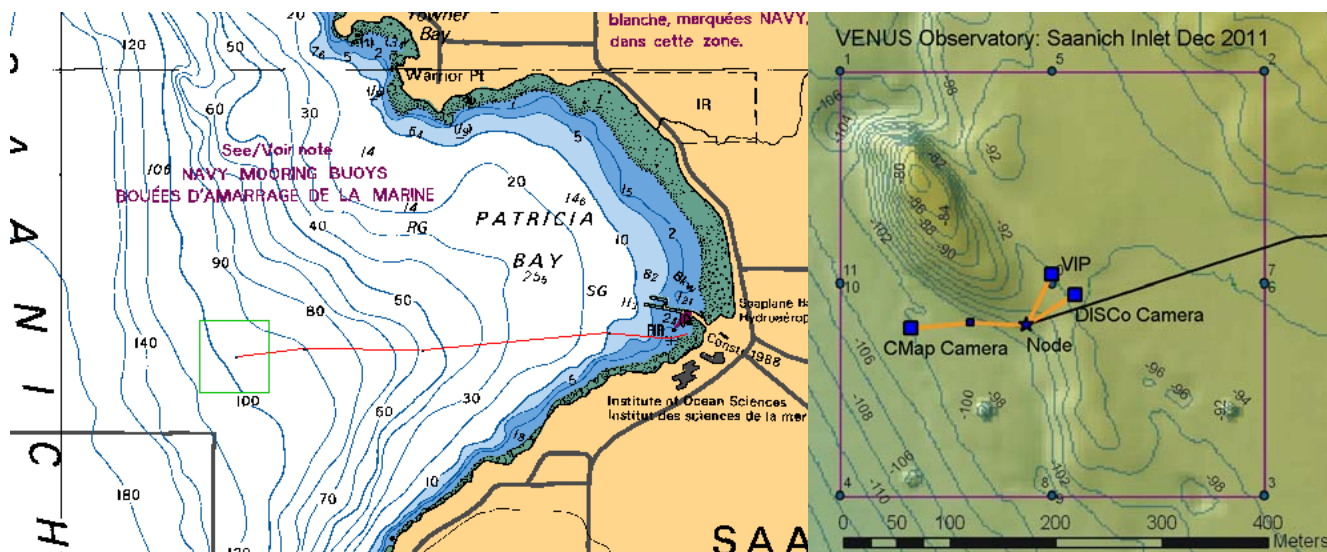
When: The Saanich Inlet cable and Node were deployed in February 2006, the Strait of Georgia cable was laid in May 2007, followed by the installation of Nodes in Oct. 2007 and Sept. 2008.

Latest system and instrument deployments: **December 15, 2011**

Where: The latest system positions are:

Saanich Inlet: As of December 15, 2011

Name	Latitude	Longitude	Depth [m]
Study Area	48° 39.184' N	123° 29.350' W	NW Corner
	48° 39.184' N	123° 29.017' W	NE Corner
	48° 38.967' N	123° 29.017' W	SE Corner
	48° 38.967' N	123° 29.350' W	SW Corner
Node	48° 39.0540' N	123° 29.2027' W	100 m
Anode	48° 39.08' N	123° 27.07' W	5 m
VIP	48° 39.0816' N	123° 29.1851' W	96 m
CMap Camera Site 1	48° 39.0523' N	123° 29.2936' W	104 m
DISCo Camera Site 2	48° 39.0696' N	123° 29.1651' W	96 m

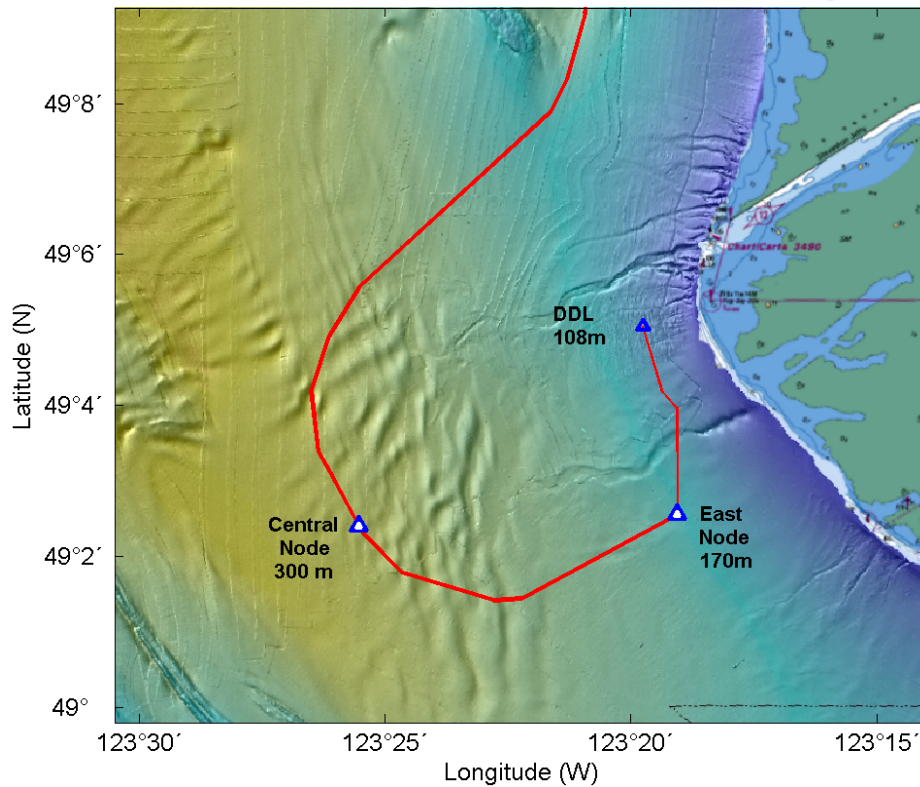


Strait of Georgia: As of December 15, 2011

The following gear is considered permanent, and will be serviced for many years. It is connected to the VENUS cabled observatory via high voltage fibre optic cables. Each Node is surrounded by a study area of 250m radius with instruments and cables. Cables and Obstruction Areas are noted on the most recent CHS chart #3463.

Strait of Georgia Instruments: December 15, 2011

VENUS Infrastructure in the Strait of Georgia



Name	Latitude	Longitude	Depth	Description
Central Node	49° 2.408' N	123° 25.529' W	300 m	Large orange and black TRF.
VIP Central	49° 2.3845' N	123° 25.5546' W	300 m	Large white steel frame.
Hydrophone Central	49° 2.4060' N	123° 25.5198' W	300 m	Yellow Frame w/3 tripods
East Node	49° 2.552' N	123° 19.065' W	170 m	Large orange and black TRF.
VIP East	49° 2.535' N	123° 19.064' W	170 m	Large white steel frame.
Hydrophone East	49° 2.545 N	123° 19.0286' W	170 m	Yellow steel frame & 2 tripods
DDL	49° 5.0532' N	123° 19.7466' W	108 m	White Frame, cabled
Piezometer	49° 5.169' N	123° 19.7512' W	105 m	Yellow Stub on 3m Probe

Contacts: If you have any concerns, or would like further information, please contact either: Adrian Round, the VENUS Associate Director Engineering and Operations at around@uvic.ca or 250-472-5364 or Richard Dewey, the VENUS Associate Director Research at rdewey@uvic.ca or 250-472-4009.